

BLUE RIDGE GRANITE

Perfect, Polished Swimming Pool Finishes

Blue Ridge Granite swimming pool finishes are the industry's finest. Our granite is off-white with natural specs of black quartz and mica that look spectacular underwater. Sold as a component system, we provide perfectly sized crushed granite mixed with performance enhancement cement additives in a 50 # bag. Our individual pre-measured packs of pigments are available in over 16 stock colors to give the granite finish its background color. This combination of ingredients provides an inert polishable product resistance to staining, chlorine, and acid attack. Unlike competing polishable marble finishes the granite won't etch due to the acid in the pool. Once plastered, we recommend acid washing or polishing the finish to its final smooth surface.

Benefits

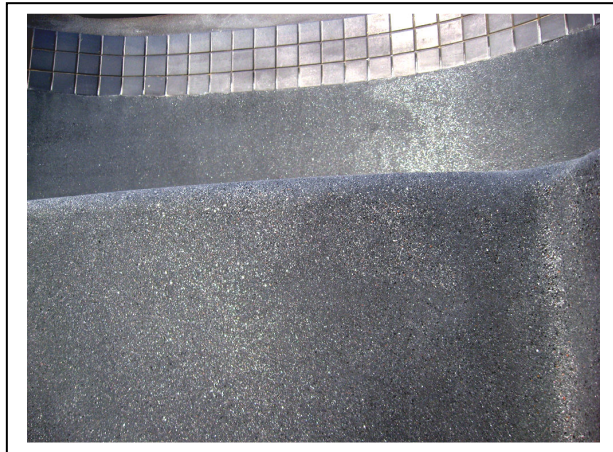
- aggregate impervious to pool water chemicals
- strongest combination of aggregate shape and sizing
- After a 28 day cure >4700 psi.
- controlled aggregate sizing for smooth feel
- color depth, quartz/mica detail, natural look
- UV/chemical resistant inorganic color
- polished exposure
- easy to install
- Only non-fade inorganic pigments

Job Site Component Packaging

Aggregate

with admixtures are packaged in 50 lb bags

Color Packs: premixed pre-measured, packaged as a unit to be blended one per 94 lb bag of Type I white Portland cement



*Blue Ridge Granite Pool Finishes are designed to be polished using wet diamond grinding tools.

Batch Design

- 4 Color Packs
- 4 (94 lb) bags of White Portland Cement
- 14 (50lb) bags of Blue Ridge Granite Aggregate

Application: Blue Ridge Granite Plaster

Professional pool plasterers throughout the United States are specifically trained in the application of Blue Ridge Granite swimming pool plaster finishes. Pyramid Cement Products performs job site training.

Material Parameters

A minimum of 40 degrees and a maximum of 90 degrees Fahrenheit should be achieved prior to material being applied, and during material application.

Material should be stored in a dry environment

Adding calcium chloride to material may affect color, workability and setting characteristics

Warranty

Materials are guaranteed with respect to uniformity and quality within manufacturing specifications. Seller makes no other warranty, expressed or implied, regarding the use of its products. Since use of the product is beyond seller's control, the buyer assumes all risks of use. Seller's sole obligation shall be to replace material if found to be defective. Seller shall not be liable for any damage, injury, loss, direct or consequential, resulting from the use of its products

PYRAMID CEMENT DATA SHEET



Pyramid
Cement Products

Corporate Headquarters: 9724 Industrial Dr., Pineville, NC 28134
Tel: 704-373-2529 Fax: 704-373-2540
E-mail: sales@pyramidcement.com
Web: www.pyramidcement.com